

RGB LED SPOT User Guide

LED Pin Spot, LED PAR36S, LED PAR56R, LED PAR64S, LED PAR37S, LED PAR57S

WARNING! - To reduce the risk of fire or injury:

1. Never operate this device:
 - if it has a damaged cord or plug; if it is not working properly;
 - if it has been dropped or damaged, or immersed into water.
2. Return the product to the dealer for examination and repair.
3. Keep the cord away from heated surfaces.
3. Never block the air opening of the device.
4. Never place it near fabrics or combustible materials.
5. Never drop or insert any object into any opening.
6. Always unplug this product immediately after using.

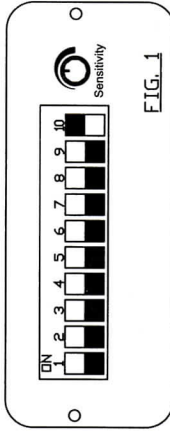
Operating Instruction

i, Stand Alone mode (Dip10 is "on")

The Stand Alone mode is activated automatically when the fixture is absent of DMX signal. Please make sure the dip 10 is turned on before operating your device.

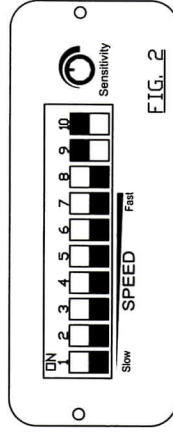
ii, Sound Action

Please set the dip 10 to "on", set dip 9 to "off", then the unit step into Sound Action function, and you can adjust the sensitivity via the "Sensitivity" knob.



iii, Auto Mix Color

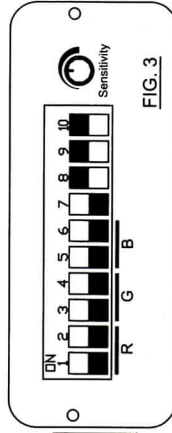
Please set the dip 9, 10 to "on", set dip 8 to "off", then the unit step into Auto Mix Color function. You can adjust the mixing speed via dip 1 ~7.



iiii, Manual Mode

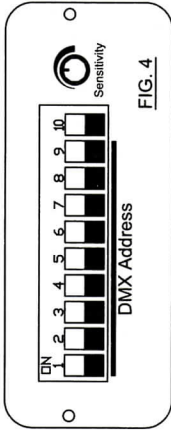
Please set the dip 8, 9, 10 to "on", then the unit step into Manual mode, and you can adjust the lightness of the LEDs via the dip switches: dip 1, 2 control red, dip 3, 4 control Green, dip 5, 6 control Blue.

R	DIP1, 2	off,off	on,off	off,on	on,on
G	DIP3, 4	(0, 0)	(1, 0)	(0, 1)	(1, 1)
B	DIP5, 6				
Brightness		0	25%	50%	100%



2, DMX Mode

DMX mode allow you link a serial units into a chain with some DMX approved cables with 3-pin (or 5-pin) XLR-plug and connectors. then you can control them with a standard DMX controller.



When you set the Dip switches # 10 to "off", one or a few of the other dip switches is(are) on, the unit step into DMX model. Dips 1 ~ 9 set the DMX addresses. DMX mode have 6 Chs

CH-6	CH-1	CH-2	CH-3	CH-4	CH-5	CH-6
MODE	R	G	B	MACRO	Speed/Strobe	MODE
Color Setting 0-31	0 OFF 1-255 Dimmer	0 OFF 1-255 Dimmer	0 OFF 1-255 Dimmer		0-15 OFF 16-255 STROBE with 16 adjustable Speeds	Color Setting 0-31
Lightness decreasing (FADE OUT) 32-63	0-15 OFF 16-255 ON	0-15 OFF 16-255 ON	0-15 OFF 16-255 ON			Lightness decreasing (FADE OUT) 32-63
Lightness increasing (FADE IN) 64-95	0-15 OFF 16-255 ON	0-15 OFF 16-255 ON	0-15 OFF 16-255 ON	0-15 Macro OFF		Lightness increasing (FADE IN) 64-95
FADE OUT & IN mode 96-127	0-15 OFF 16-255 ON	0-15 OFF 16-255 ON	0-15 OFF 16-255 ON		0-255 SPEED	FADE OUT & IN mode 96-127
Mix color automatically 128-159						Mix color automatically 128-159
3-Color flash in lum (Chasing) 160-191	0-255 NA	0-255 NA	0-255 NA			3-Color flash in lum (Chasing) 160-191
7-Color flash in lum (Chasing) 192-223						7-Color flash in lum (Chasing) 192-223
Sound Action 224-255					0-255 NA	Sound Action 224-255
0-255 NA	0-255 NA	0-255 NA	0-255 NA	16-255 Macro ON	16-255 STROBE	0-255 NA

Note: When the Macro mode is on, you can choose the light color you prefer via the DMX channel 4 between 31 kinds of colors and black out.

Connection with the mains

DANGER TO LIFE! The electric connection must only be carried out by a qualified electrician! In order to connect the device to the mains, you have to install a power-plug. The occupation of the connection-cables is as follows:

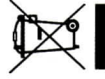
Cable	Pin	International
Brown	Live	L
Blue	Neutral	N
Yellow/Green	Earth	⊕

TECHNICAL SPECIFICATIONS:

Power supply: Max. 230-240V/AC, 50HZ

Power consumption: Max. 10W (61 pcs LEDs) / 21W (151 pcs LEDs)

V3.0 10 Dip Switches



Made in China